

Prince Rupert to Terrace





A jaunty angle



The cannery village





Fish trap used by natives



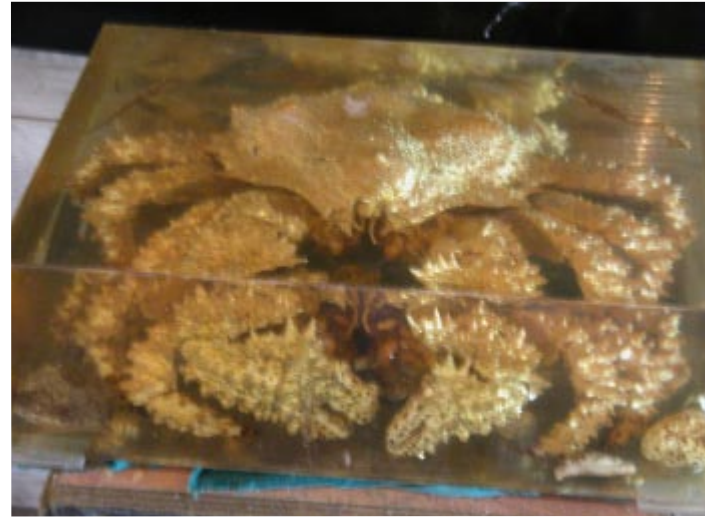
Captain Geoffrey in the wheelhouse



A not-so-modern life raft



7' Whale skull



King Crab



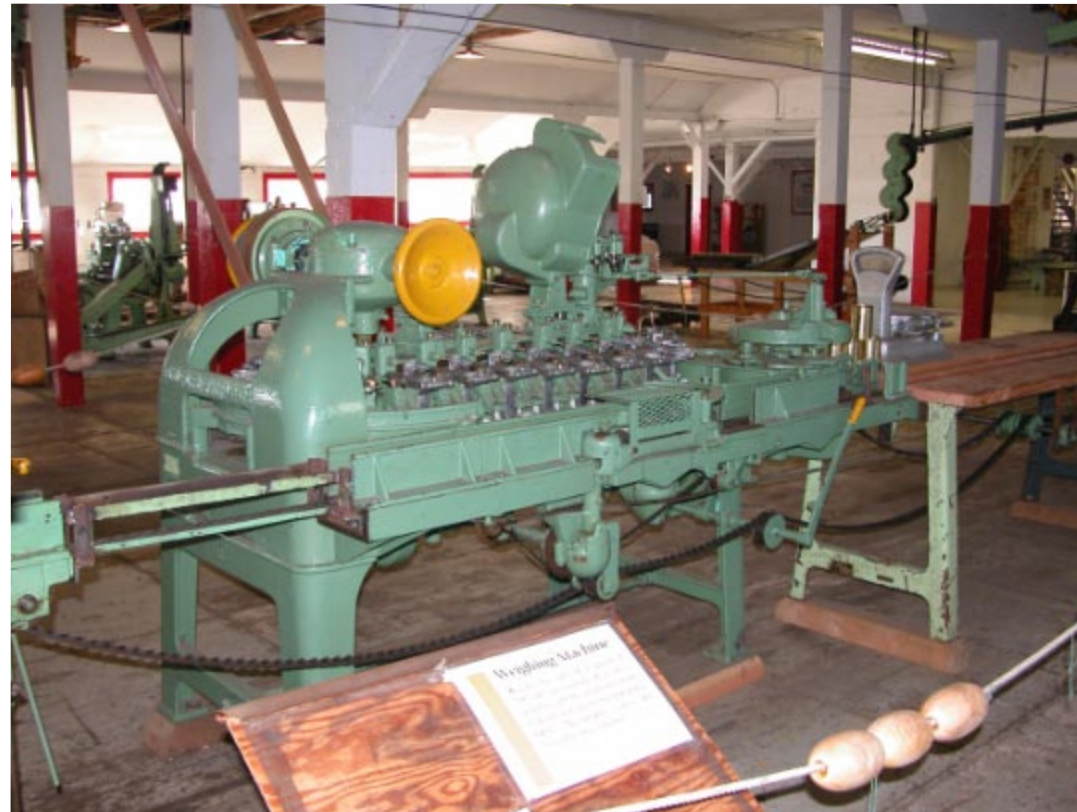
Skeena River from the fish cannery



the Skeena River



The cannery village



One of the machines in the production line



Who's looking in my mirror



Somebody's worked out a lot of frustration on that woodpile!



Skeena River

Carved into a tree